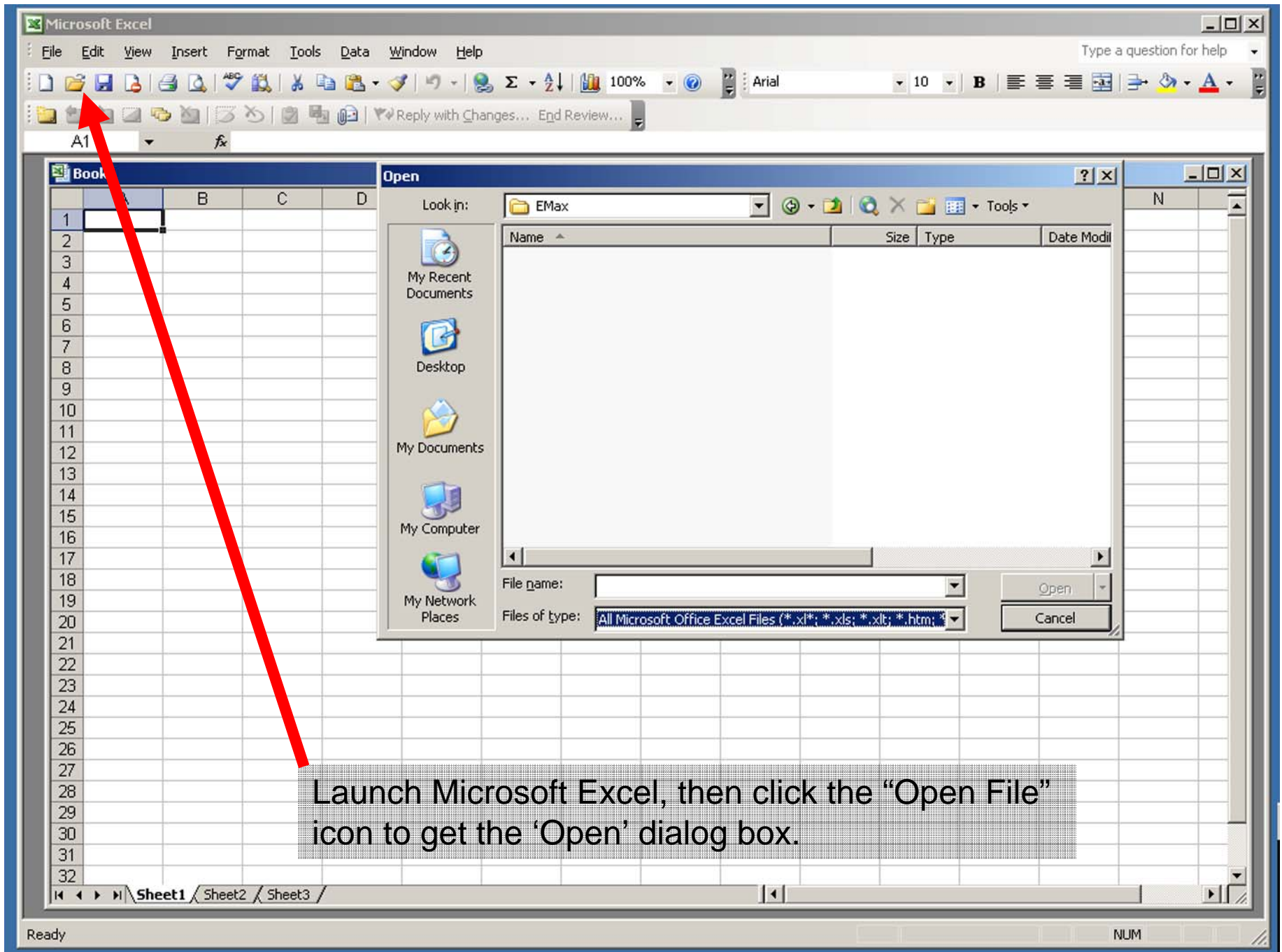
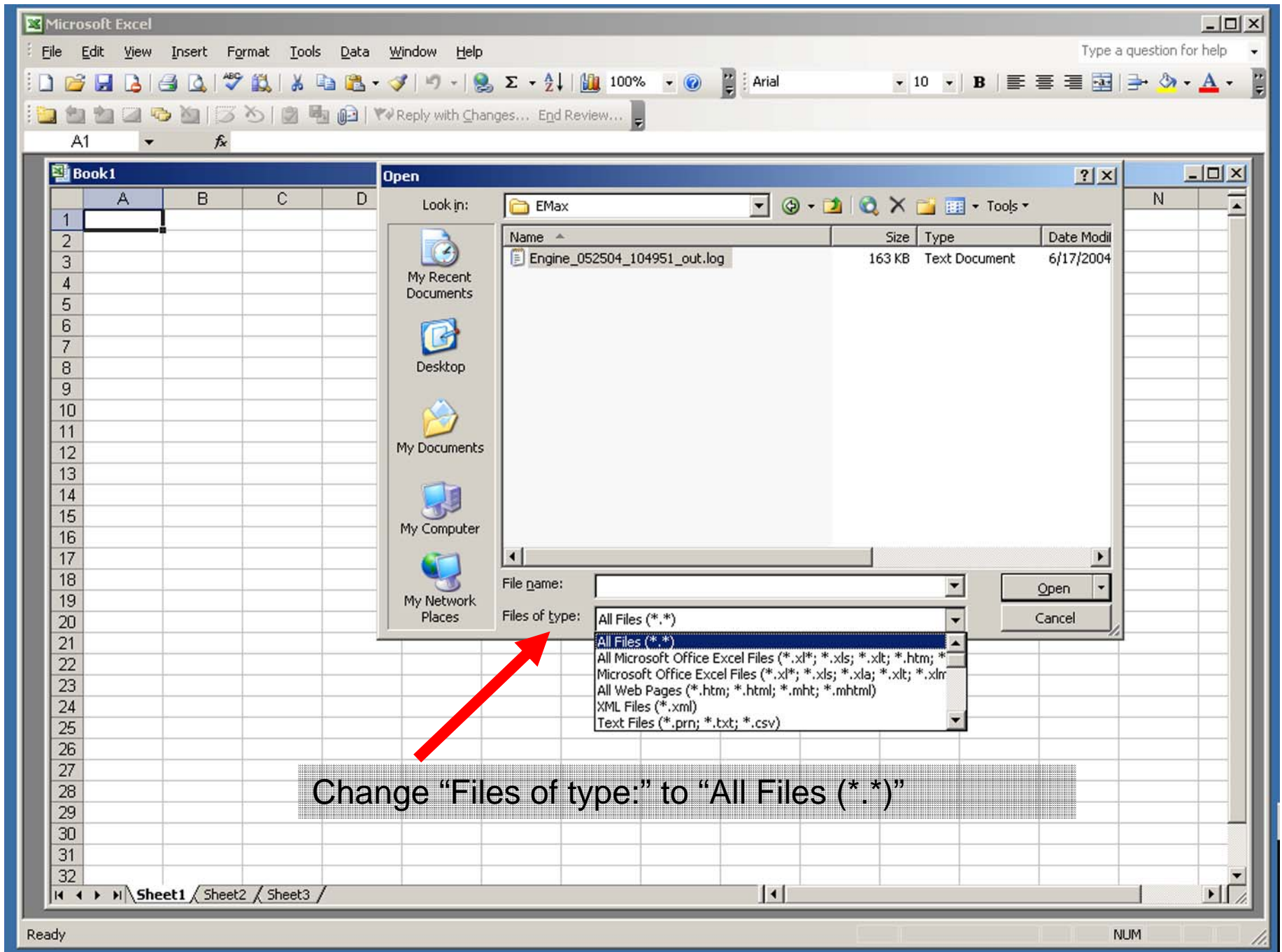
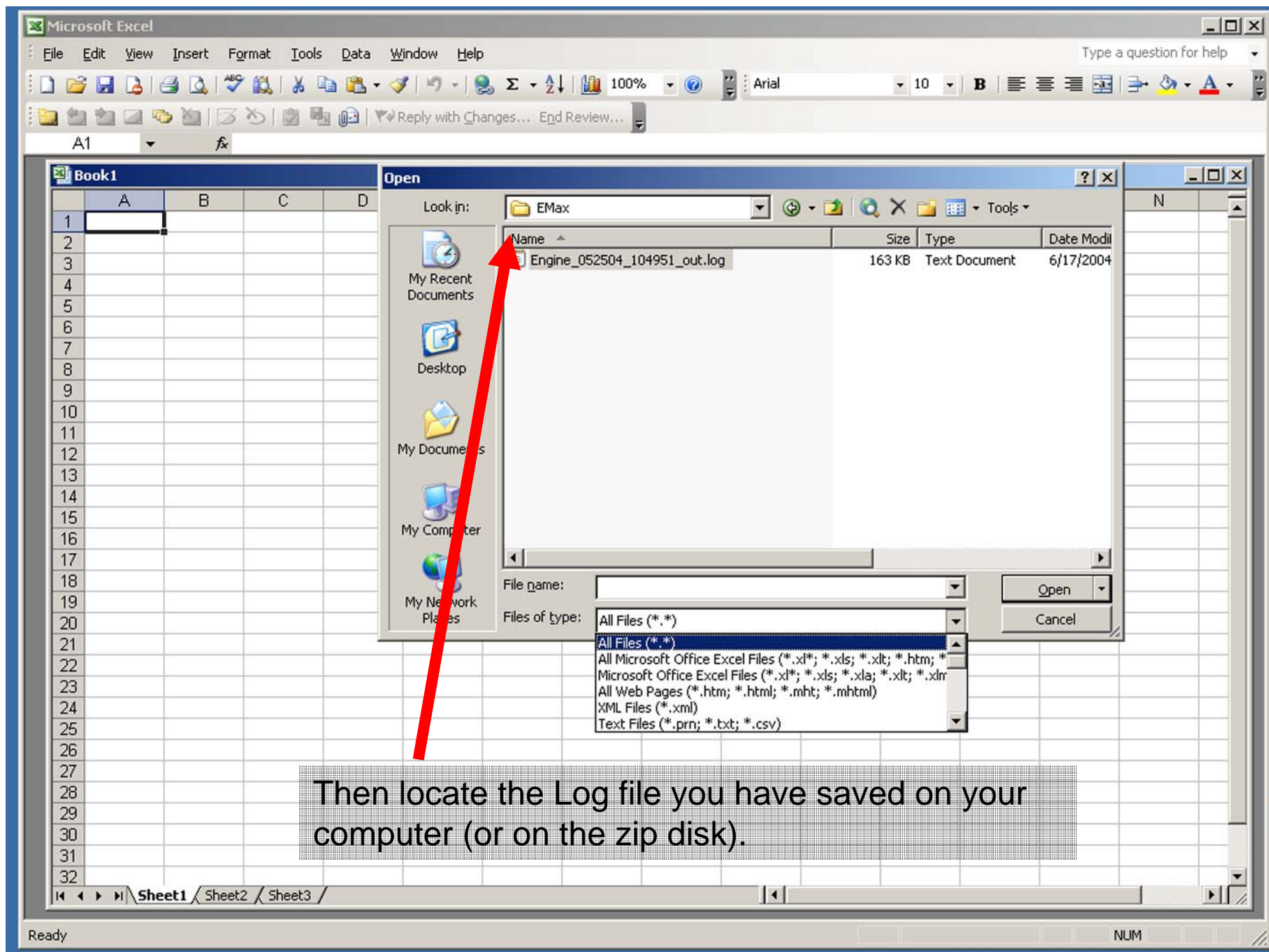

Viewing EMax Engine Log Data In Microsoft Excel







Microsoft Excel

File Edit View Insert Format Tools Data Window Help

Type a question for help

100% Arial 10 B

Book1

Text Import Wizard - Step 1 of 3

The Text Wizard has determined that your data is Delimited.
If this is correct, choose Next, or choose the data type that best describes your data.

Original data type

Choose the file type that best describes your data:

- Delimited - Characters such as commas or tabs separate each field.
- Fixed width - Fields are aligned in columns with spaces between each field.

Start import at row: 1 File origin: 437 : OEM United States

Preview of file C:\EMax\Engine_052504_104951_out.log.

```
1 Avidyne Engine Data Log
2 5/25/04 10:49:51
3 "TIME", "LAT", "LON", "E1", "E2", "E3", "E4", "E5", "E6", "C1", "C2", "C3"
4 10:49:48,0.0000,0.0000, 0,0,0,0,0,0, 0,0,0,0,0,0, 0,0,0,-40, 0.
5 10:49:54,0.0000,0.0000, 875,865,875,906,892,933, 0,0,0,0,0,0, 0
```

Cancel < Back Next > Finish

This will launch the Import Wizard. Click 'Next.'

Ready NUM

Microsoft Excel

File Edit View Insert Format Tools Data Window Help

Type a question for help

100% Arial 10 B

Book1

Text Import Wizard - Step 2 of 3

This screen lets you set the delimiters your data contains. You can see how your text is affected in the preview below.

Delimiters

Tab Semicolon Comma Treat consecutive delimiters as one

Space Other: Text qualifier: "

Data preview

Avidyne Engine Data Log										
5/25/04 10:49:51										
TIME	LAT	LON	E1	E2	E3	E4	E5	E6		
10:49:48	0.0000	0.0000	0	0	0	0	0	0		
10:49:54	0.0000	0.0000	875	865	875	906	892	93		

Cancel < Back Next > Finish

Check the "Comma" box. Then click 'Next.'

Ready NUM

Microsoft Excel

File Edit View Insert Format Tools Data Window Help

Type a question for help

100% Arial 10 B

A1 Avidyne Engine Data Log

Engine_052504_104951_out.log

	A	B	C	D	E	F	G	H	I	J	K	L	M	N
1	Avidyne Engine Data Log													
2	#####													
3	TIME	LAT	LON	E1	E2	E3	E4	E5	E6	C1	C2	C3	C4	C5
4	10:49:48	0	0	0	0	0	0	0	0	0	0	0	0	0
5	10:49:54	0	0	875	865	875	906	892	933	0	0	0	0	0
6	10:50:00	0	0	887	872	892	921	902	949	0	0	0	0	0
7	10:50:06	0	0	898	888	904	937	921	962	0	0	0	0	0
8	10:50:12	0	0	904	902	910	950	931	973	0	0	0	0	0
9	10:50:18	0	0	912	910	915	957	941	978	0	0	0	0	0
10	10:50:24	0	0	919	922	917	969	945	986	0	0	0	0	0
11	10:50:30	0	0	862	839	877	866	914	910	0	0	0	0	0
12	10:50:36	0	0	814	743	849	818	895	863	0	0	0	0	0
13	10:50:42	0	0	825	717	852	752	886	855	0	0	0	0	0
14	10:50:48	0	0	818	716	829	727	881	834	0	0	0	0	0
15	10:50:54	0	0	885	815	886	856	944	930	0	0	0	0	0
16	10:51:00	0	0	845	845	908	888	912	953	0	0	0	0	0
17	10:51:06	0	0	882	886	926	919	935	975	0	0	0	0	104
18	10:51:12	0	0	813	862	870	903	908	892	0	0	102	0	107
19	10:51:18	0	0	785	856	837	816	895	822	101	0	105	0	109
20	10:51:24	46.839	-92.2034	743	805	836	785	887	805	104	0	107	0	112
21	10:51:42	46.839	-92.2034	706	753	832	728	883	812	107	0	111	0	116
22	10:51:48	46.839	-92.2034	720	767	820	702	886	790	110	0	113	103	118
23	10:51:54	46.839	-92.2034	696	760	823	683	883	769	112	101	116	105	122
24	10:52:00	46.839	-92.2034	690	777	810	679	883	772	115	104	118	108	125
25	10:52:06	46.839	-92.2034	703	750	780	673	887	819	118	107	121	111	128
26	10:52:12	46.839	-92.2034	733	765	768	689	879	816	120	110	123	113	131
27	10:52:18	46.839	-92.2034	743	765	768	689	879	816	120	110	123	113	131
28	10:52:24	46.839	-92.2034	743	765	768	689	879	816	120	110	123	113	131
29	10:52:30	46.839	-92.2034	743	765	768	689	879	816	120	110	123	113	131
30	10:52:36	46.8392	-92.2034	743	765	768	689	879	816	120	110	123	113	131
31	10:52:42	46.8392	-92.2034	743	765	768	689	879	816	120	110	123	113	131
32	10:52:48	46.8392	-92.2034	920	922	927	944	943	1005	134	126	137	126	147

Ready NUM

Your Engine Log Data will appear, with data time-stamped every 6 seconds...

Microsoft Excel

File Edit View Insert Format Tools Data Window Help

Type a question for help

100% Arial 10 B

A1 Avidyne Engine Data Log

Engine_052504_104951_out.log

	A	B	C	D	E	F	G	H	I	J	K	L	M	N
1	Avidyne Engine Data Log													
2	#####													
3	TIME	LAT	LON	E1	E2	E3	E4	E5	E6	C1	C2	C3	C4	C5
4	10:49:48	0	0	0	0	0	0	0	0	0	0	0	0	0
5	10:49:54	0	0	875	865	875	906	892	933	0	0	0	0	0
6	10:50:00	0	0	887	872	892	921	902	949	0	0	0	0	0
7	10:50:06	0	0	898	888	904	937	921	962	0	0	0	0	0
8	10:50:12	0	0	904	902	910	950	931	973	0	0	0	0	0
9	10:50:18	0	0	912	910	915	957	941	978	0	0	0	0	0
10	10:50:24	0	0	919	922	917	969	945	986	0	0	0	0	0
11	10:50:30	0	0	862	839	877	866	914	910	0	0	0	0	0
12	10:50:36	0	0	814	743	849	818	895	863	0	0	0	0	0
13	10:50:42	0	0	825	717	852	752	886	855	0	0	0	0	0
14	10:50:48	0	0	818	716	829	727	881	834	0	0	0	0	0
15	10:50:54	0	0	885	815	886	856	944	930	0	0	0	0	0
16	10:51:00	0	0	845	845	908	888	912	953	0	0	0	0	0
17	10:51:06	0	0	882	886	926	919	935	975	0	0	0	0	104
18	10:51:12	0	0	813	862	870	903	908	892	0	0	102	0	107
19	10:51:18	0	0	785	856	837	816	895	822	101	0	105	0	109
20	10:51:24	46.839	-92.2034	743	805	836	785	887	805	104	0	107	0	112
21	10:51:42	46.839	-92.2034	706	753	832	728	883	812	107	0	111	0	116
22	10:51:48	46.839	-92.2034	720	767	820	702	886	790	110	0	113	103	118
23	10:51:54	46.839	-92.2034	696	760	823	683	883	769	112	101	116	105	122
24	10:52:00	46.839	-92.2034	690	777	810	679	883	772	115	104	118	108	125
25	10:52:06	46.839	-92.2034	703	750	780	673	887	819	118	107	121	111	128
26	10:52:12	46.839	-92.2034	733	765	768	689	879	816	120	110	123	113	131
27	10:52:18	46.839	-92.2034	741	751	781	681	871	811	121	111	124	114	133
28	10:52:24	46.839	-92.2034	741	751	781	681	871	811	121	111	124	114	136
29	10:52:30	46.839	-92.2034	741	751	781	681	871	811	121	111	124	114	139
30	10:52:36	46.8392	-92.2034	876	887	905	899	935	973	128	120	132	121	141
31	10:52:42	46.8392	-92.2034	900	909	917	927	941	993	131	123	135	124	144
32	10:52:48	46.8392	-92.2034	920	922	927	944	943	1005	134	126	137	126	147

... including GPS position

Engine_052504_104951_out

Ready NUM

Microsoft Excel

File Edit View Insert Format Tools Data Window Help

Type a question for help

100% Arial 10 B

A1 Avidyne Engine Data Log

Engine_052504_104951_out.log

	A	B	C	D	E	F	G	H	I	J	K	L	M	N
1	Avidyne Engine Data Log													
2	#####													
3	TIME	LAT	LON	E1	E2	E3	E4	E5	E6	C1	C2	C3	C4	C5
4	10:49:48	0	0	0	0	0	0	0	0	0	0	0	0	0
5	10:49:54	0	0	875	865	875	906	892	933	0	0	0	0	0
6	10:50:00	0	0	887	872	892	921	902	949	0	0	0	0	0
7	10:50:06	0	0	898	888	904	937	921	962	0	0	0	0	0
8	10:50:12	0	0	904	902	910	950	931	973	0	0	0	0	0
9	10:50:18	0	0	912	910	915	957	941	978	0	0	0	0	0
10	10:50:24	0	0	919	922	917	969	945	986	0	0	0	0	0
11	10:50:30	0	0	862	839	877	866	914	910	0	0	0	0	0
12	10:50:36	0	0	814	743	849	818	895	863	0	0	0	0	0
13	10:50:42	0	0	825	717	852	752	886	855	0	0	0	0	0
14	10:50:48	0	0	818	716	829	727	881	834	0	0	0	0	0
15	10:50:54	0	0	885	815	886	856	944	930	0	0	0	0	0
16	10:51:00	0	0	845	845	908	888	912	953	0	0	0	0	0
17	10:51:06	0	0	882	886	926	919	935	975	0	0	0	0	104
18	10:51:12	0	0	813	862	870	903	908	892	0	0	102	0	107
19	10:51:18	0	0	785	856	837	816	895	822	101	0	105	0	109
20	10:51:24	46.839	-92.2034	743	805	836	785	887	805	104	0	107	0	112
21	10:51:42	46.839	-92.2034	706	753	832	728	883	812	107	0	111	0	116
22	10:51:48	46.839	-92.2034	720	767	820	702	886	790	110	0	113	103	118
23	10:51:54	46.839	-92.2034	696	760	823	683	883	769	112	101	116	105	122
24	10:52:00	46.839	-92.2034	690	777	810	679	883	772	115	104	118	108	125
25	10:52:06	46.839	-92.2034	703	750	780	673	887	819	118	107	121	111	128
26	10:52:12	46.839	-92.2034	733	765	768	689	879	816	120	110	123	113	131
27	10:52:18	46.839	-92.2034	747	754	829	692	895	820	122	112	126	115	133
28	10:52:24	46.839	-92.2034	741	751	840	698	898	828	126	115	128	117	136
29	10:52:30	46.839	-92.2034	831	843	832	814	925	888	127	117	130	119	139
30	10:52:36	46.8392	-92.2034	876	887	905	899	935	973	128	120	132	121	141
31	10:52:42	46.8392	-92.2034	900	909	917	927	941	993	131	123	135	124	144
32	10:52:48	46.8392	-92.2034	920	922	927	944	943	1005	134	126	137	126	147

EGT Temps...

Engine_052504_104951_out

Ready NUM

Microsoft Excel

File Edit View Insert Format Tools Data Window Help

Type a question for help

100% Arial 10 B

A1 Avidyne Engine Data Log

Engine_052504_104951_out.log

	A	B	C	D	E	F	G	H	I	J	K	L	M	N
1	Avidyne Engine Data Log													
2	#####													
3	TIME	LAT	LON	E1	E2	E3	E4	E5	E6	C1	C2	C3	C4	C5
4	10:49:48	0	0	0	0	0	0	0	0	0	0	0	0	0
5	10:49:54	0	0	875	865	875	906	892	933	0	0	0	0	0
6	10:50:00	0	0	887	872	892	921	902	949	0	0	0	0	0
7	10:50:06	0	0	898	888	904	937	921	962	0	0	0	0	0
8	10:50:12	0	0	904	902	910	950	931	973	0	0	0	0	0
9	10:50:18	0	0	912	910	915	957	941	978	0	0	0	0	0
10	10:50:24	0	0	919	922	917	969	945	986	0	0	0	0	0
11	10:50:30	0	0	862	839	877	866	914	910	0	0	0	0	0
12	10:50:36	0	0	814	743	849	818	895	863	0	0	0	0	0
13	10:50:42	0	0	825	717	852	752	886	855	0	0	0	0	0
14	10:50:48	0	0	818	716	829	727	881	834	0	0	0	0	0
15	10:50:54	0	0	885	815	886	856	944	930	0	0	0	0	0
16	10:51:00	0	0	845	845	908	888	912	953	0	0	0	0	0
17	10:51:06	0	0	882	886	926	919	935	975	0	0	0	0	104
18	10:51:12	0	0	813	862	870	903	908	892	0	0	102	0	107
19	10:51:18	0	0	785	856	837	816	895	822	101	0	105	0	109
20	10:51:24	46.839	-92.2034	743	805	836	785	887	805	104	0	107	0	112
21	10:51:42	46.839	-92.2034	706	753	832	728	883	812	107	0	111	0	116
22	10:51:48	46.839	-92.2034	720	767	820	702	886	790	110	0	113	103	118
23	10:51:54	46.839	-92.2034	696	760	823	683	883	769	112	101	116	105	122
24	10:52:00	46.839	-92.2034	690	777	810	679	883	772	115	104	118	108	125
25	10:52:06	46.839	-92.2034	703	750	780	673	887	819	118	107	121	111	128
26	10:52:12	46.839	-92.2034	733	765	768	689	879	816	120	110	123	113	131
27	10:52:18	46.839	-92.2034	741	754	794	694	884	825	122	112	126	115	133
28	10:52:24	46.839	-92.2034	741	751	840	699	889	825	125	116	128	117	136
29	10:52:30	46.839	-92.2034	831	843	882	844	925	888	127	117	130	119	139
30	10:52:36	46.8392	-92.2034	876	887	905	899	935	973	128	120	132	121	141
31	10:52:42	46.8392	-92.2034	900	909	917	927	941	993	131	123	135	124	144
32	10:52:48	46.8392	-92.2034	920	922	927	944	943	1005	134	126	137	126	147

CHT Temps...

Engine_052504_104951_out

Ready NUM

Microsoft Excel

File Edit View Insert Format Tools Data Window Help

Type a question for help

100% Arial 10 B

A1 Avidyne Engine Data Log

Engine_052504_104951_out.log

	N	O	P	Q	R	S	T	U	V	W	X	Y	Z	AA	
1															
2															
3	C5	C6	OILT	OILP	RPM	OAT	MAP	FF	USED	AMP1	AMP2	AMPB	MBUS	EBUS	
4	0	0	0	0	0	-40	0	0	0	0	0	0	-60	0	0
5	0	0	0	53	840	9	13.3	2.2	0	0	0	0	2	27.5	26.7
6	0	0	0	53	840	9	13.3	2.2	0	0	0	0	2	27.2	26.6
7	0	0	0	53	860	9	13.3	2.1	0	0	0	0	2	27.7	26.8
8	0	0	0	53	860	9	13.1	2.2	0	0	0	0	1	27.7	27
9	0	0	0	53	860	9	13.1	2.2	0	0	0	0	1	27.7	27
10	0	0	0	53	880	9	13	2.2	0	0	0	0	1	27.7	26.8
11	0	0	0	48	600	9	15.5	1.6	0	2	0	0	-60	24.2	24.2
12	0	0	0	48	600	9	15.6	1.6	0	11	0	0	-60	24	23.7
13	0	0	0	48	590	9	15.6	1.6	0	14	0	0	-60	23.7	23.6
14	0	0	0	48	630	9	16	1.6	0	23	0	0	-60	24.2	23.6
15	0	0	0	51	800	9	13	2.3	0	0	0	0	2	25.3	25
16	0	0	0	48	650	9	13.8	1.9	0.1	51	0	0	-60	24.5	24.3
17	104	0	0	52	910	10	12.8	2.2	0.1	0	0	0	3	27.7	26.8
18	107	0	0	47	600	10	15.5	1.6	0.1	21	0	0	-60	23.8	23.7
19	109	0	0	47	610	10	15.5	1.6	0.1	34	0	0	-60	23.7	23.6
20	112	102	0	47	590	10	15.6	1.6	0.1	9	0	0	-60	23.7	23.5
21	116	106	0	47	600	10	15.6	1.6	0.1	9	0	0	-60	23.7	23.5
22	118	108	0	47	600	10	15.5	1.6	0.1	14	0	0	-60	23.7	23.5
23	122	111	0	47	600	10	15.5	1.6	0.1	20	0	0	-60	23.7	23.5
24	125	114	0	47	600	10	15.5	1.6	0.1	23	0	0	-60	23.7	23.5
25	128	117	0	47	600	10	15.5	1.6	0.1	24	0	0	-60	23.7	23.5
26	131	119	0	47	600	10	15.3	1.6	0.1	28	0	0	-60	23.7	23.5
27	133	121	0	47	600	10	15.5	1.6	0.1	0	0	0	-60	23.7	23.5
28	136	124	0	50	800	10	12.8	2.2	0.1	0	0	0	-60	25.7	25
29	139	127	0	51	800	10	12.8	2.2	0.1	0	0	0	-60	26.6	25.7
30	141	128	0	51	800	10	12.8	2.2	0.1	0	0	0	-60	26.6	25.7
31	144	131	0	51	800	10	12.8	2.1	0.1	0	0	0	-60	27.1	26.2
32	147	134	0	51	890	10	12.8	2.1	0.1	0	0	0	-60	27.7	26.7

Oil Temps, Oil Pressures, OAT, & Manifold Pressure ...

Engine_052504_104951_out

Ready NUM

	N	O	P	Q	R	S	T	U	V	W	X	Y	Z	AA
1														
2														
3	C5	C6	OILT	OILP	RPM	OAT	MAP	FF	USED	AMP1	AMP2	AMPB	MBUS	EBUS
4	0	0	0	0	0	-40	0	0	0	0	0	0	-60	0
5	0	0	0	53	840	9	13.3	2.2	0	0	0	2	27.5	26.7
6	0	0	0	53	840	9	13.3	2.2	0	0	0	2	27.2	26.6
7	0	0	0	53	860	9	13.3	2.1	0	0	0	2	27.7	26.8
8	0	0	0	53	860	9	13.1	2.2	0	0	0	1	27.7	27
9	0	0	0	53	860	9	13.1	2.2	0	0	0	1	27.7	27
10	0	0	0	53	880	9	13	2.2	0	0	0	1	27.7	26.8
11	0	0	0	48	600	9	15.5	1.6	0	2	0	-60	24.2	24.2
12	0	0	0	48	600	9	15.6	1.6	0	11	0	-60	24	23.7
13	0	0	0	48	590	9	15.6	1.6	0	14	0	-60	23.7	23.6
14	0	0	0	48	630	9	16	1.6	0	23	0	-60	24.2	23.6
15	0	0	0	51	800	9	13	2.3	0	0	0	2	25.3	25
16	0	0	0	48	650	9	13.8	1.9	0.1	51	0	-60	24.5	24.3
17	104	0	0	52	910	10	12.8	2.2	0.1	0	0	3	27.7	26.8
18	107	0	0	47	600	10	15.5	1.6	0.1	21	0	-60	23.8	23.7
19	109	0	0	47	610	10	15.5	1.6	0.1	34	0	-60	23.7	23.6
20	112	102	0	47	590	10	15.6	1.6	0.1	9	0	-60	23.7	23.5
21	116	106	0	47	600	10	15.6	1.6	0.1	9	0	-60	23.7	23.5
22	118	108	0	47	600	10	15.5	1.6	0.1	14	0	-60	23.7	23.5
23	122	111	0	47	600	10	15.5	1.6	0.1	20	0	-60	23.7	23.5
24	125	114	0	47	600	10	15.5	1.6	0.1	23	0	-60	23.7	23.5
25	128	117	0	47	600	10	15.5	1.6	0.1	24	0	-60	23.7	23.5
26	131	119	0	47	600	10	15.3	1.6	0.1	28	0	-60	23.7	23.5
27	133	121	0	47	610	10	12.8	2.1	0.1	0	0	2	26.6	25.7
28	136	124	0	53	840	9	13.3	2.2	0	0	0	2	25.7	25
29	139	127	0	53	860	9	13.3	2.1	0	0	0	2	26.6	25.7
30	141	128	0	51	860	10	12.8	2.1	0.1	0	0	2	26.6	25.7
31	144	131	0	51	860	10	12.8	2.1	0.1	0	0	3	27.1	26.2
32	147	134	0	51	890	10	12.8	2.1	0.1	0	0	4	27.7	26.7

...Fuel & Electrical.

Plotting EMax Engine Log Data In a Microsoft Excel Chart

Microsoft Excel

File Edit View Insert Format Tools Data Window Help

Type a question for help

100% Arial 10 B

A1 Avidyne Engine Data Log

Engine_052504_104951_out.log

	A	B	C	D	E	F	G	H	I	J	K	L	M	N
1	Avidyne Engine Data Log													
2	#####													
3	TIME	LAT	LON	E1	E2	E3	E4	E5	E6	C1	C2	C3	C4	C5
4	10:49:48	0	0	0	0	0	0	0	0	0	0	0	0	0
5	10:49:54	0	0	875	865	875	906	892	933	0	0	0	0	0
6	10:50:00	0	0	887	872	892	921	902	949	0	0	0	0	0
7	10:50:06	0	0	898	888	904	937	921	962	0	0	0	0	0
8	10:50:12	0	0	904	902	910	950	931	973	0	0	0	0	0
9	10:50:18	0	0	912	910	915	957	941	978	0	0	0	0	0
10	10:50:24	0	0	919	922	917	969	945	986	0	0	0	0	0
11	10:50:30	0	0	862	839	877	866	914	910	0	0	0	0	0
12	10:50:36	0	0	814	743	849	818	895	863	0	0	0	0	0
13	10:50:42	0	0	825	717	852	752	886	855	0	0	0	0	0
14	10:50:48	0	0	818	716	829	727	881	834	0	0	0	0	0
15	10:50:54	0	0	885	815	886	856	944	930	0	0	0	0	0
16	10:51:00	0	0	845	845	908	888	912	953	0	0	0	0	0
17	10:51:06	0	0	882	886	926	919	935	975	0	0	0	0	104
18	10:51:12	0	0	813	862	870	903	908	892	0	0	102	0	107
19	10:51:18	0	0	785	856	837	816	895	822	101	0	105	0	109
20	10:51:24	46.839	-92.2034	743	805	836	785	887	805	104	0	107	0	112
21	10:51:42	46.839	-92.2034	706	753	832	728	883	812	107	0	111	0	116
22	10:51:48	46.839	-92.2034	720	767	820	702	886	790	110	0	113	103	118
23	10:51:54	46.839	-92.2034	696	760	823	683	883	769	112	101	116	105	122
24	10:52:00	46.839	-92.2034	690	777	810	679	883	772	115	104	118	108	125
25	10:52:06	46.839	-92.2034	703	750	780	673	887	819	118	107	121	111	128
26	10:52:12	46.839	-92.2034	733	765	768	689	879	816	120	110	123	113	131
27	10:52:18	46.839	-92.2034	920	922	927	944	943	1005	134	126	137	126	147
28	10:52:24	46.839	-92.2034	920	922	927	944	943	1005	134	126	137	126	147
29	10:52:30	46.839	-92.2034	920	922	927	944	943	1005	134	126	137	126	147
30	10:52:36	46.8392	-92.2034	920	922	927	944	943	1005	134	126	137	126	147
31	10:52:42	46.8392	-92.2034	920	922	927	944	943	1005	134	126	137	126	147
32	10:52:48	46.8392	-92.2034	920	922	927	944	943	1005	134	126	137	126	147

In this example, we will chart our EGTs and CHTs versus Time for this 2:10 hr. flight.

Ready NUM

Microsoft Excel

File Edit View Insert Format Tools Data Window Help

Type a question for help

100% Arial 10 B

A3 TIME

Engine_052504_104951_out.log

	A	B	C	D	E	F	G	H	I	J	K	L	M	N
1	Avidyne Engine Data Log													
2	#####													
3	TIME	LAT	LON	E1	E2	E3	E4	E5	E6	C1	C2	C3	C4	C5
4	10:49:48	0	0	0	0	0	0	0	0	0	0	0	0	0
5	10:49:54	0	0	875	865	875	906	892	933	0	0	0	0	0
6	10:50:00	0	0	887	872	892	921	902	949	0	0	0	0	0
7	10:50:06	0	0	898	888	904	937	921	962	0	0	0	0	0
8	10:50:12	0	0	904	902	910	950	931	973	0	0	0	0	0
9	10:50:18	0	0	912	910	915	957	941	978	0	0	0	0	0
10	10:50:24	0	0	919	922	917	969	945	986	0	0	0	0	0
11	10:50:30	0	0	862	839	877	866	914	910	0	0	0	0	0
12	10:50:36	0	0	814	743	849	818	895	863	0	0	0	0	0
13	10:50:42	0	0	825	717	852	752	886	855	0	0	0	0	0
14	10:50:48	0	0	818	716	829	727	881	834	0	0	0	0	0
15	10:50:54	0	0	885	815	886	856	944	930	0	0	0	0	0
16	10:51:00	0	0	845	845	908	888	912	953	0	0	0	0	0
17	10:51:06	0	0	882	886	926	919	935	975	0	0	0	0	104
18	10:51:12	0	0	813	862	870	903	908	892	0	0	102	0	107
19	10:51:18	0	0	785	856	837	816	895	822	101	0	105	0	109
20	10:51:24	46.839	-92.2034	743	805	836	785	887	805	104	0	107	0	112
21	10:51:42	46.839	-92.2034	706	753	832	728	883	812	107	0	111	0	116
22	10:51:48	46.839	-92.2034	720	767	820	702	886	790	110	0	113	103	118
23	10:51:54	46.839	-92.2034	696	760	823	683	883	769	112	101	116	105	122
24	10:52:00	46.839	-92.2034	690	777	810	679	883	772	115	104	118	108	125
25	10:52:06	46.839	-92.2034	690	777	810	679	883	772	115	104	118	108	125
26	10:52:12	46.839	-92.2034	690	777	810	679	883	772	115	104	118	108	125
27	10:52:18	46.839	-92.2034	690	777	810	679	883	772	115	104	118	108	125
28	10:52:24	46.839	-92.2034	690	777	810	679	883	772	115	104	118	108	125
29	10:52:30	46.839	-92.2034	690	777	810	679	883	772	115	104	118	108	125
30	10:52:36	46.8392	-92.2034	690	777	810	679	883	772	115	104	118	108	125
31	10:52:42	46.8392	-92.2034	690	777	810	679	883	772	115	104	118	108	125
32	10:52:48	46.8392	-92.2034	690	777	810	679	883	772	115	104	118	108	125

While holding the 'Ctrl' key, click on cell A3 and drag down to the bottom of the column to select all the Time data.
(In this example, we selected cells A3:A1284)

Ready Sum=636.3072222 NUM

Microsoft Excel

File Edit View Insert Format Tools Data Window Help

Type a question for help

100% Arial 10 B

D3 E1

Engine_052504_104951_out.log

	C	D	E	F	G	H	I	J	K	L	M	N	O	P
1267	-92.1677	708	706	667	650	644	673	209	236	215	221	214	228	16
1268	-92.1707	848	859	808	828	788	829	206	234	213	218	211	225	16
1269	-92.1731	991	1007	973	1019	972	1055	204	231	210	215	208	223	16
1270	-92.1756	1051	1068	1039	1103	1048	1143	203	229	208	214	207	220	16
1271	-92.1782	1081	1096	1073	1148	1083	1188	201	227	207	212	205	219	16
1272	-92.1808	873	893	856	903	858	922	199	225	205	210	204	216	16
1273	-92.1828	774	826	780	800	793	816	198	223	203	208	202	214	16
1274	-92.1844	783	843	773	788	746	756	196	222	202	206	200	213	16
1275	-92.1854	785	879	762	843	718	768	194	220	199	204	198	211	16
1276	-92.1859	781	882	791	862	772	773	193	218	198	203	197	209	16
1277	-92.1863	779	872	830	835	826	777	192	217	198	201	196	208	16
1278	-92.1866	772	862	845	825	852	817	190	216	196	201	195	206	16
1279	-92.1868	758	841	854	828	865	819	190	215	196	200	195	205	16
1280	-92.1871	770	860	860	808	873	814	190	214	196	200	195	204	16
1281	-92.1875	819	874	890	853	914	875	189	214	196	199	195	203	16
1282	-92.1878	858	891	894	896	918	915	190	214	195	199	195	204	16
1283	-92.1882	868	896	909	912	927	918	190	213	196	199	196	203	16
1284	-92.1882	868	896	909	912	927	918	190	213	196	199	196	203	16
1285														
1286														
1287														
1288														
1289														
1290														
1291														
1292														
1293														
1294														
1295														
1296														
1297														
1298														

Ready

Sum=11434572.31 NUM

Scroll back to the top of the file then hold the 'Ctrl' key again and click on cell D3 and drag down to the bottom of column O to select all EGT & CHT data.
(In this example, we selected cells D3:O1284)

The screenshot shows the Microsoft Excel interface with the Chart Wizard dialog box open. The 'Standard Types' tab is active, and the 'Line' chart type is selected in the 'Chart type' list. The 'Chart sub-type' section shows six options, with the first one (a simple line with markers) highlighted. The background spreadsheet contains data from 'Engine_052504_104951_out.log'.

	C	D	E	F
1267	-92.1677	708	706	66
1268	-92.1707	848	859	80
1269	-92.1731	991	1007	97
1270	-92.1756	1051	1068	103
1271	-92.1782	1081	1096	107
1272	-92.1808	873	893	85
1273	-92.1828	774	826	76
1274	-92.1844	783	843	77
1275	-92.1854	785	879	76
1276	-92.1859	781	882	79
1277	-92.1863	779	872	83
1278	-92.1866	772	862	84
1279	-92.1868	758	841	85
1280	-92.1871	770	860	86
1281	-92.1875	819	874	85
1282	-92.1878	858	891	85
1283	-92.1882	868	896	90
1284	-92.1882	868	896	90

Chart Wizard - Step 1 of 4 - Chart Type

Standard Types Custom Types

Chart type:

- Column
- Bar
- Line
- Pie
- XY (Scatter)
- Area
- Doughnut
- Radar
- Surface
- Bubble

Chart sub-type

Line. Displays trend over time or categories.

Press and Hold to View Sample

Cancel < Back Next > Finish

Choose the type of chart you wish to use. In this example, we chose 'Line' and the first sub-type.

Ready Sum=11434572.31 NUM

Microsoft Excel

File Edit View Insert Format Tools Data Window Help

Type a question for help

100%

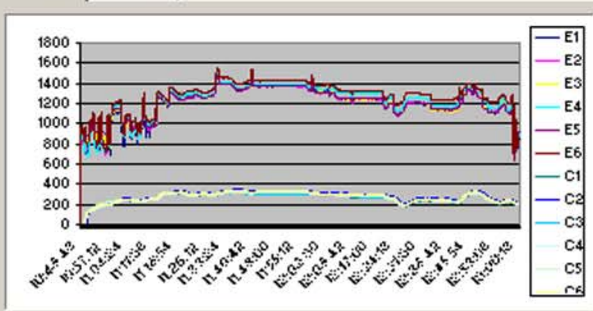
Arial 10 B

D3 E1

Engine_052504_104951_out.log

Chart Wizard - Step 2 of 4 - Chart Source Data

Data Range Series



Data range: =Engine_052504_104951_out!\$A\$3:\$A\$1284,Engine C

Series in:

Rows

Columns

Cancel < Back Next > Finish

Click 'Next.'

	C	D	E	F	M	N	O	P						
3	LON	E1	E2	E3										
4	0	0	0											
5	0	875	865											
6	0	887	872											
7	0	898	888											
8	0	904	902											
9	0	912	910											
10	0	919	922											
11	0	862	839											
12	0	814	743											
13	0	825	717											
14	0	818	716											
15	0	885	815											
16	0	845	845											
17	0	882	886											
18	0	813	862											
19	0	785	856											
20	-92.2034	743	805											
21	-92.2034	706	753											
22	-92.2034	720	767											
23	-92.2034	696	760											
24	-92.2034	690	777											
25	-92.2034	703	750											
26	-92.2034	733	765											
27	-92.2034	717	734											
28	-92.2034	741	751											
29	-92.2034	831	843	862	844	923	939	127	117	130				
30	-92.2034	876	887	905	898	895	977	106	100	102	121	141	128	0
31	-92.2034	900	900	917	927	941	923	103	106	122	140	131	0	
32	-92.2034	920	920	927	947	942	105	106	137	125	147	134	0	
33	-92.2034	955	956	960	984	978	1036	137	128	141	128	151	137	0
34	-92.2034	928	930	920	970	953	1003	139	131	142	130	152	140	0

Point

Sum=11434572.31

NUM

Microsoft Excel

File Edit View Insert Format Tools Data Window Help

Type a question for help

100%

Arial 10 B

D3 E1

Engine_052504_104951_out.log

	C	D	E	F	G	H	I	J	K	L	M	N	O	P
3	LON	E1	E2	E3	E4	E5	E6	C1	C2	C3	C4	C5	C6	OILT
4	0	0	0	0	0	0	0	0	0	0	0	0	0	0
5	0	875	865	875	906	892	933	0	0	0	0	0	0	0
6	0	887	872											
7	0	898	888											
8	0	904	902											
9	0	912	910											
10	0	919	922											
11	0	862	839											
12	0	814	743											
13	0	825	717											
14	0	818	716											
15	0	885	815											
16	0	845	845											
17	0	882	886											
18	0	813	862											
19	0	785	856											
20	-92.2034	743	805											
21	-92.2034	706	753											
22	-92.2034	720	767											
23	-92.2034	696	760											
24	-92.2034	690	777											
25	-92.2034	703	750	760	873	867	819	110	107	121	111	128	117	0
26	-92.2034	733	765	768	689	879	816	123	110	123	113	131	119	0
27	-92.2034	717	734	799	684	881	825	122	112	126	115	133	121	0
28	-92.2034	741	751	840	731	896	869	125	115	128	117	136	124	0
29	-92.2034	831	843	882	844	923	939	127	117	130	119	139	127	0
30	-92.2034	876	887	905	899	935	979	126	120	132	121	141	128	0
31	-92.2034	900	939	917	927	941	973	128	136	124	140	131	131	0
32	-92.2034	920	920	927	844	943	924	126	137	125	137	134	134	0
33	-92.2034	955	956	960	984	978	1036	137	128	141	128	151	137	0
34	-92.2034	928	930	920	970	953	1003	139	131	142	130	152	140	0

Chart Wizard - Step 3 of 4 - Chart Options

Titles Axes Gridlines Legend Data Labels Data Table

Chart title:

Category (X) axis:

Value (Y) axis:

Second category (X) axis:

Second value (Y) axis:

Cancel < Back Next > Finish

Click 'Next.'

Ready NUM

Microsoft Excel

File Edit View Insert Format Tools Data Window Help

Type a question for help

100% Arial 10 B

Engine_052504_104951_out.log

	C	D	E	F	G	H	I	J	K	L	M	N	O	P
3	LON	E1	E2	E3	E4	E5	E6	C1	C2	C3	C4	C5	C6	OILT
4	0	0	0	0	0	0	0	0	0	0	0	0	0	0
5	0	875	865	875	906	892	933	0	0	0	0	0	0	0
6	0	887	872	892	921	902	949	0	0	0	0	0	0	0
7	0	898	888	904	937	921	962	0	0	0	0	0	0	0
8	0	904	902	910	950	931	973	0	0	0	0	0	0	0
9	0	912	910	915	957	941	978	0	0	0	0	0	0	0
10	0	919	922											
11	0	862	839											
12	0	814	743											
13	0	825	717											
14	0	818	716											
15	0	885	815											
16	0	845	845											
17	0	882	886											
18	0	813	862											
19	0	785	856											
20	-92.2034	743	805											
21	-92.2034	706	753	832	728	86	812	107	0	111	0	116	106	0
22	-92.2034	720	767	820	702	886	790	110	0	113	103	118	108	0
23	-92.2034	696	760	823	683	883	769	112	101	116	105	122	111	0
24	-92.2034	690	777	810	679	883	772	115	104	118	108	125	114	0
25	-92.2034	703	750	780	673	887	819	118	107	121	111	128	117	0
26	-92.2034	733	765	768	689	879	816	120	110	123	113	131	119	0
27	-92.2034	717	734	799	684	881	825	122	112	126	115	133	121	0
28	-92.2034	741	751	840	731	896	839	125	115	128	117	136	124	0
29	-92.2034	831	843	882	844	923	95	127	117	130	119	139	127	0
30	-92.2034	876	887	905	839	895	917	126	120	133	121	141	128	0
31	-92.2034	900	933	917	892	925	915	127	122	135	122	142	131	0
32	-92.2034	920	922	927	892	925	915	128	123	136	123	143	134	0
33	-92.2034	955	956	960	984	978	1036	137	128	141	128	151	137	0
34	-92.2034	928	930	920	970	953	1003	139	131	142	130	152	140	0

Chart Wizard - Step 4 of 4 - Chart Location

Place chart:

As new sheet: Chart1

As object in: Engine_052504_104951_out

Cancel < Back Next > Finish

Select 'As new sheet' option.

Ready NUM

